



Taylor Linen Swing Blouse Tutorial

Description





A super easy to make blouse that can be worn on all sorts of occasions. Taylor's loose shape makes it very flattering and comfortable to wear.

Materials

2 yards of [IL019 AUTUMN GOLD Softened](#)

4 vintage buttons

Matching sewing thread



Tools

Pattern paper, Pattern master, Erasable fabric marker/chalk, Seam ripper, Tape measure, Button hole sewing foot, Pins, Rotary cutter, Paper scissors, Fabric scissors, Bias tape maker (or follow [this tutorial](#) if you do not have one)

Sewing machine, Overlocker



Time

6 hours

Difficulty

Intermediate

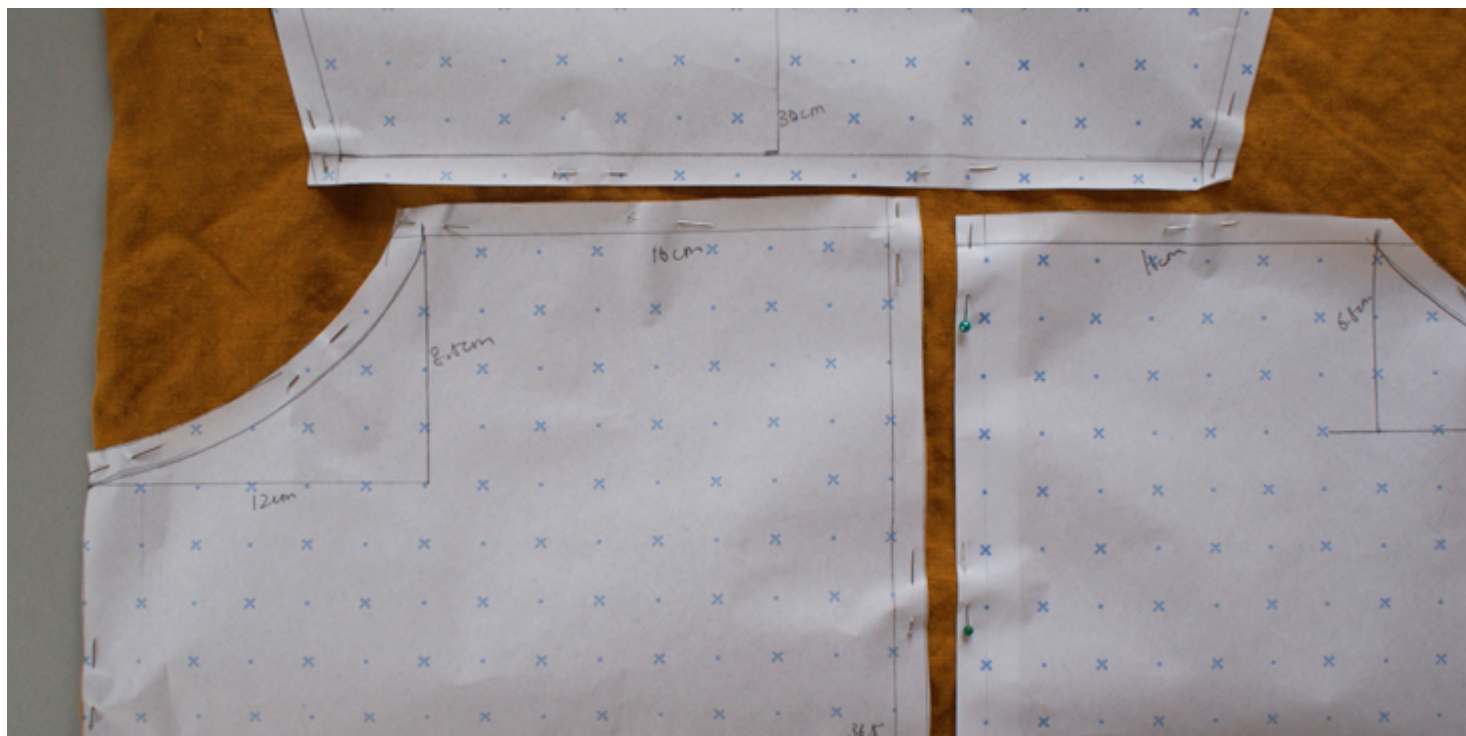
Pattern

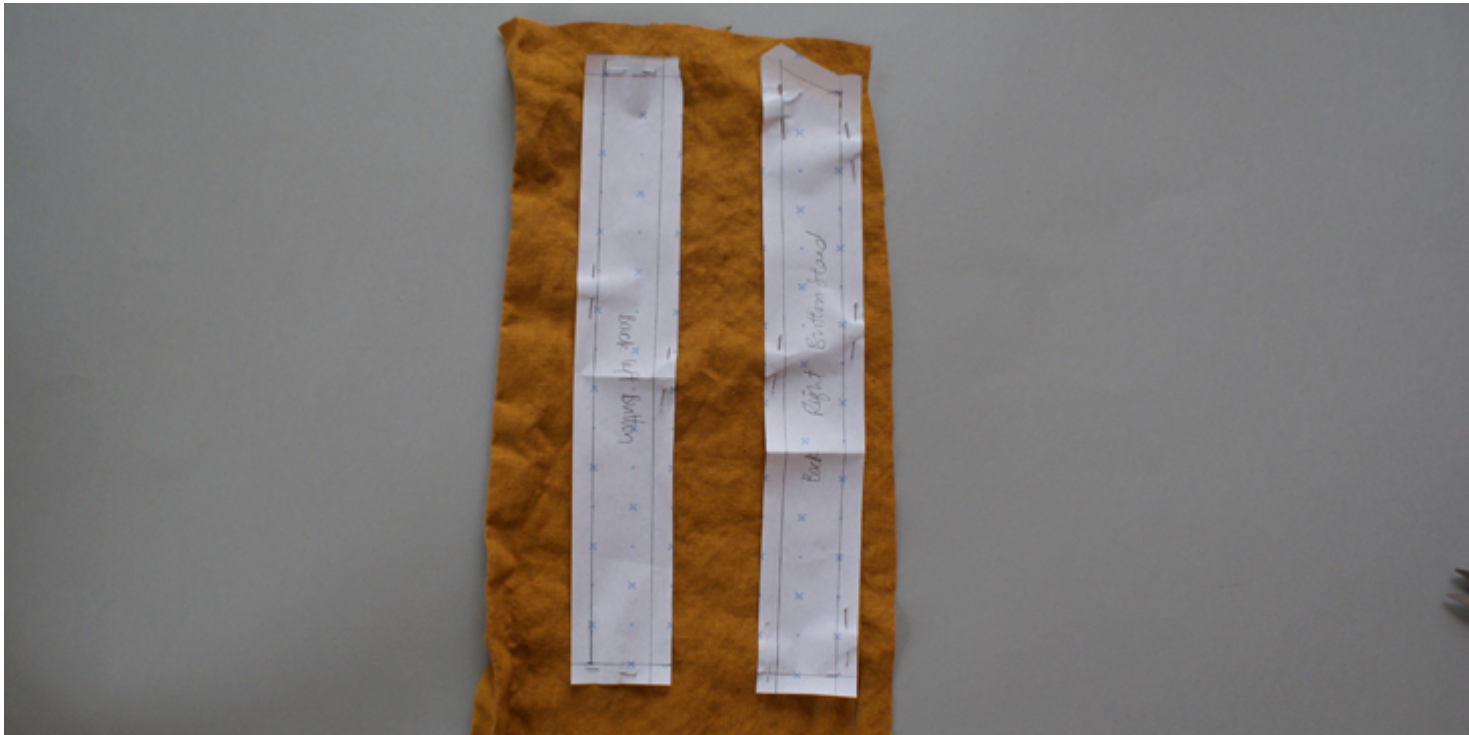
You can access the multi-sized printable PDF pattern by following this link [HERE](#). The model is wearing US size 6.

Steps

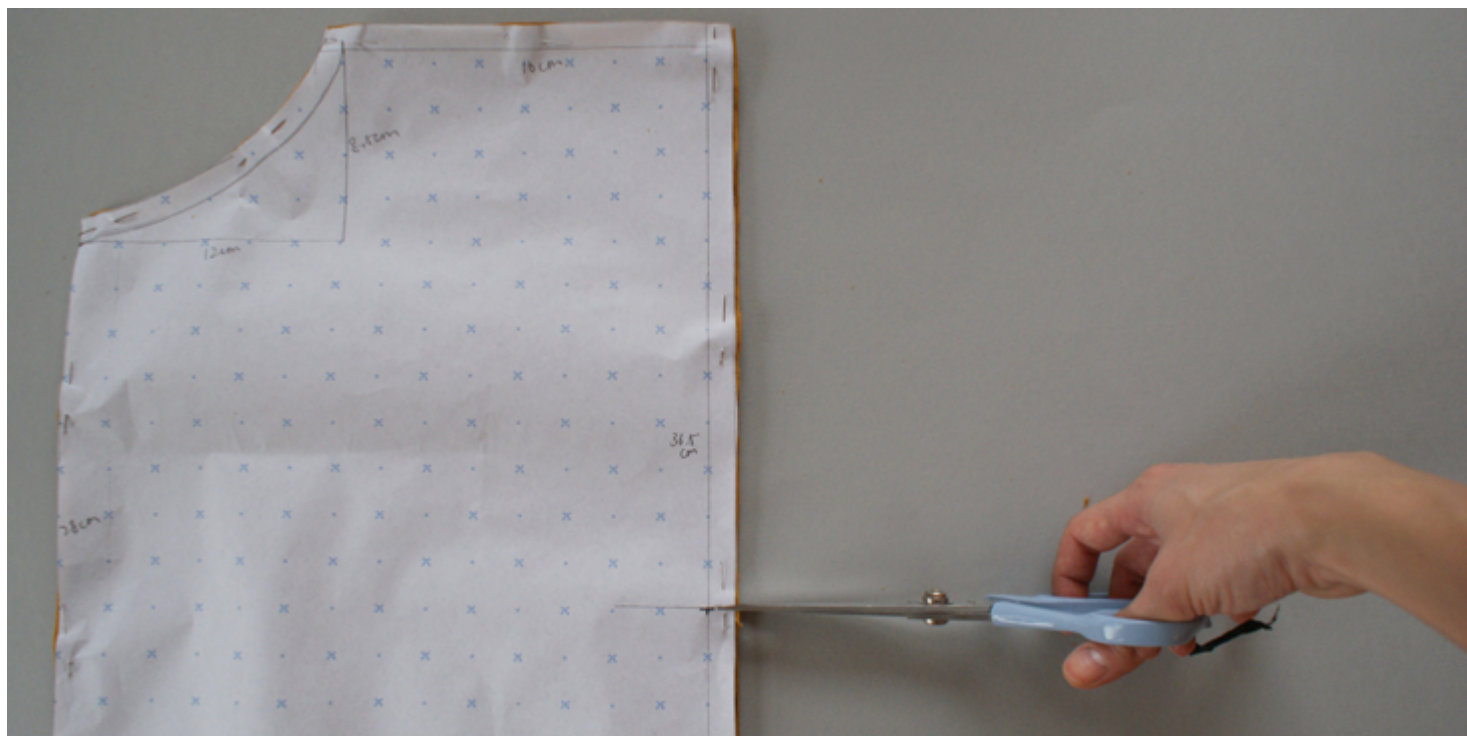
Note: Prewash your fabric and tumble dry it until it is still slightly moist, dry in room temperature. Iron the fabric so it is easier to work with.

1. With the fabric folded, place the pattern onto the fabric. Remember the vertical direction of the pattern needs to be parallel to the selvage of the fabric.





2. Pin each fabric piece onto the fabric, or if you prefer, mark around the pattern onto the fabric. Remember to also mark the notch marks, this is to ensure the measurements for sleeves and center of pieces remain on the fabric.



3. Cut out the pieces.

4. Overlock (or your other chosen methods) all around the pieces.



5. Make 30 inches (76 cm) of bias binding with the remaining fabric.

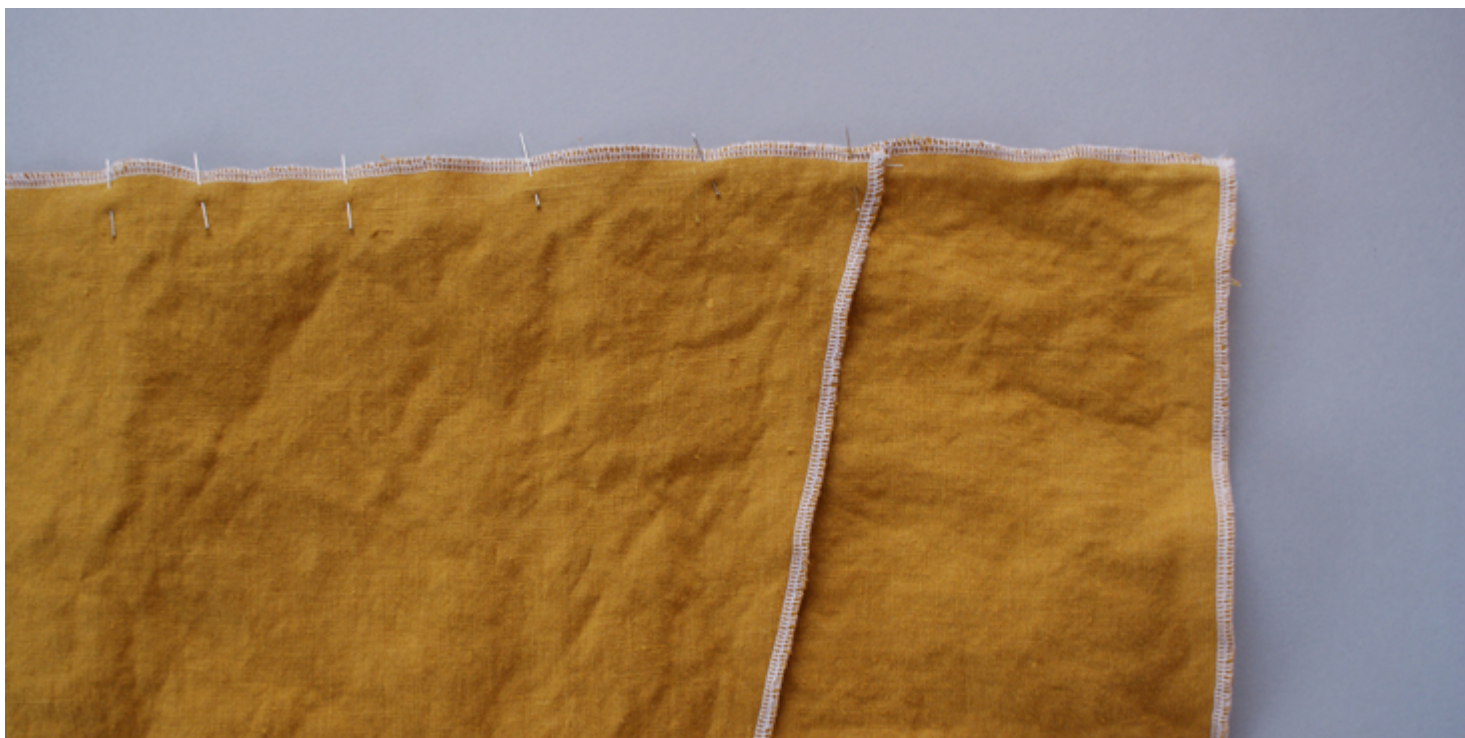


6. Pin together the shoulder seam for the front and back panel. The back panel that is wider will be your left side back panel. So make sure when you are pinning the panels together, with its wrong side facing you, the larger back panel is on your right-hand side.



7. Sew along the seam allowance for both shoulder seams and press open the seams.

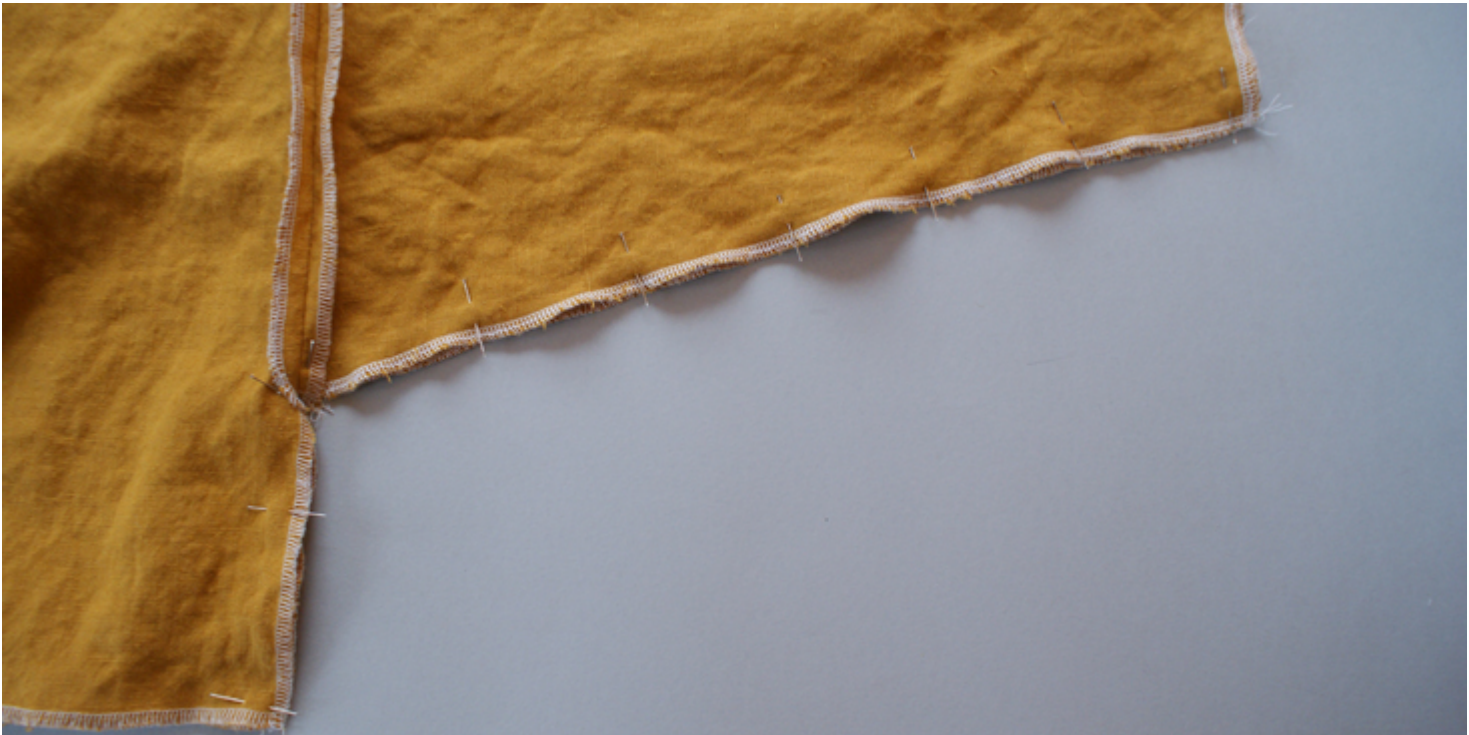
8. Now, turn the bodice sideways and place the sleeves on top on it, with its wrong side facing you.



9. Making sure the center notch on the sleeve panel matches up with the shoulder seam. This should also automatically mean your sleeve side seams match up with the sleeve notch on your front and back body panels.

10. Sew along the seam allowance for both sleeves and press open the seams.

11. Now, join the sleeve seam along itself, and also the side seams for the body. Pin along the edge.



12. Sew along the seams and press them open.

13. Fold up $\frac{3}{8}$ inch (1 cm) of the raw edge on the sleeve onto the wrong side. Pin along it and top stitch over this fold, making sure the needle catches onto the fabric.



14. Press flat.

15. Now, pin the button stands onto the center seam of the bodice. Sew along this seam and press it open.



16. Take some of the bias tape and with its wrong side facing you, and right side facing the button stand's right side, pin along its short edge.



17. Fold the button stand onto the back panels so its wrong side is facing you. Now carefully pinned the bias tape along the collar until it reaches the other back panel.



18. With the other button stand folded onto the back panel, pin the bias tape at the given seam allowance onto the button stand. Pin down the remaining open collar area.



19. Sew along the collar at the given seam allowance. This should also go on top of your bias tape folding line.

20. Press it open and notch along the collar, allowing ease to the curved fabric. Also, trim the corner where the button stands and sewn onto the back panels. This will decrease the thickness once the garment is turned over.





21. Turn all the bias tape and button stand panels over so their right sides are facing you. Following the tape's folding line and the button stand's seam allowance, pin the material down onto the bodice panels.



22. Top stitch along the pinned area. Press the sewn parts to ensure the fabric sits flat.



23. Now, join the frill panels together on both side seams.

24. Because the amount that needs to be gathered is very little, we can do this manually. Lay the panels along the bottom seam of the bodice, making sure the side seams and the notches in the middle of panels matches.

25. Pin along the edge, with occasional folding to create the gathering effect.



26. On the back part of the bodice, the left panel will lie 1 1/4 inch (3cm) over the right panels. Ensure the middle notch of the back frill panel matches the edge of the right back panel, and pin it on top of both left and right back panels.



27. Stitch along the pinned seam at the given allowance. Press the seam open.

28. Fold $\frac{3}{8}$ inch (1cm) of the bottom edge of the frill panels towards its

wrong side. Top stitch over this. Give the fabric a press.



29. To make the buttonholes, measure out equally 4 points for the buttons on the wrong side of the left back panel. The buttonholes will only be sewn on the part of the bodice with a button stand.



30. Also mark the width of the button for sewing purpose also. For this tutorial, the buttonholes are sewn horizontally.



31. Sew the buttonholes.



32. After opening up the buttonholes, mark where to place the buttons accordingly on the right side of the right back panels. A dot will do fine.



33. Sew the buttons onto the marked points.



Have a browse through our [plethora of colors](#) and find the one that inspires you for this project!

CATEGORY

1. TUTORIALS

Category

1. TUTORIALS

Date Created

February 16, 2015

Author

cynthia-fong